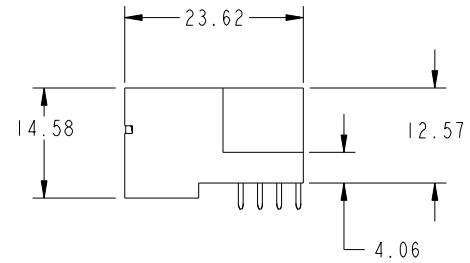
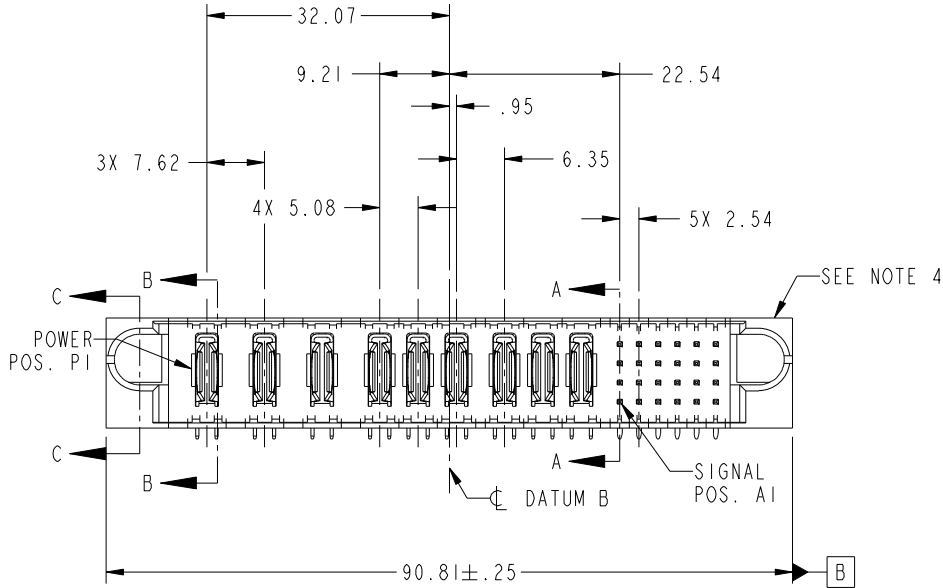
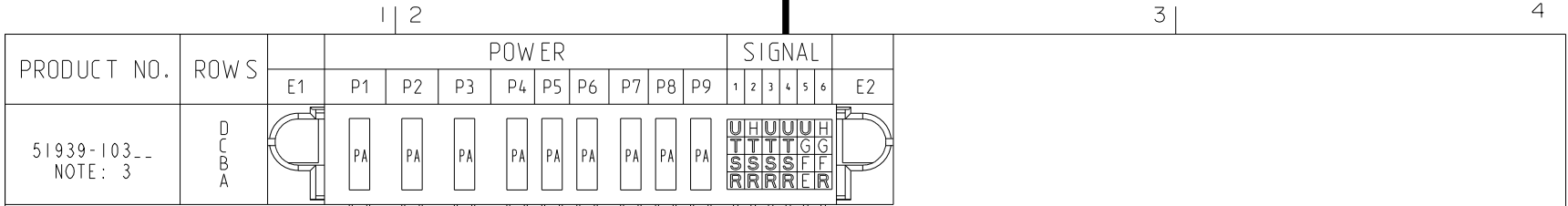


Tous droits strictement réservés. Reproduction ou communication a des tiers interdite sous quelque forme que ce soit sans autorisation écrite du propriétaire. Propriété de c.FCI. Droits de reproduction FCI.

All rights strictly reserved. Reproduction or issue to third parties in any form whatever is not permitted without written authority from the proprietor. Property of FCI. Copyright FCI.



CODE	DIM "M" MATING LENGTH	CONTACT TYPE
E	[5.59]	SIGNAL
F	[5.59]	SIGNAL
G	[5.59]	SIGNAL
H	[5.59]	SIGNAL
R	[6.86]	SIGNAL
S	[6.86]	SIGNAL
T	[6.86]	SIGNAL
U	[6.86]	SIGNAL
PA	[N/A]	POWER

mat'l code				SEE NOTE		tolerances unless otherwise specified	
ltr	ecn no.	dr	date	linear	angles		
A	V04-0014	TAB	01/12/04	0.X ± 0.5			
B	V04-0271	TAB	03/29/04	0.XX ± 0.25			
C	DG05-0464	SW	11/15/05	0.XXX ± 0.10			
D	DG07-0498	JW	09/12/08	0° ± 2°			
				dr	T. BRUNGARD	01/12/04	
				enrg	M. GRAY	01/12/04	
				chr	M. GRAY	01/12/04	
				appd	M. GRAY	01/12/04	
sheet index	revision sheet	D 1	D 2	D 3	D 4		

CUSTOMER		FCI	
COPY		www.fciconnect.com	
projection	title	9P + 24S RIGHT ANGLE SOLDER HEADER	
product family	code	PwrBlade	
size	dwg no	213	
scale		sheet 1 of 4	
1:1	A	51939-103	

A

B

1 | 2

3 |

4

A

B

Pro/E

PDM: Rev:D

STATUS: Released

Printed: Sep 26, 2008

cage code 2856

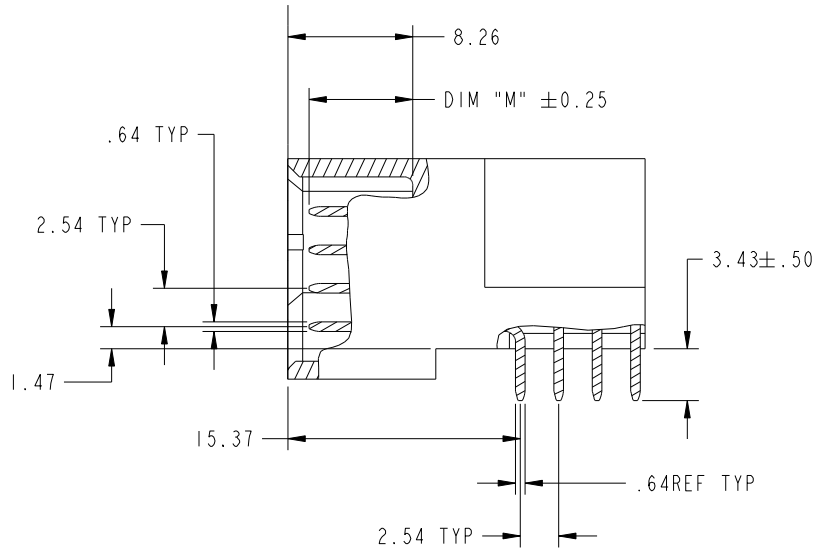
Tous droits strictement réservés. Reproduction ou communication a des tiers interdite sous quelque forme que ce soit sans autorisation écrite du propriétaire. Propriété de c.FCI. Droits de reproduction FCI.

All rights strictly reserved. Reproduction or issue to third parties in any form whatever is not permitted without written authority from the proprietor. Property of FCI. Copyright FCI.

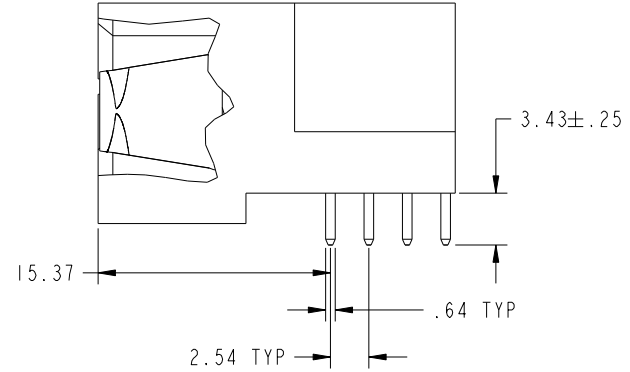


PRODUCT NUMBER

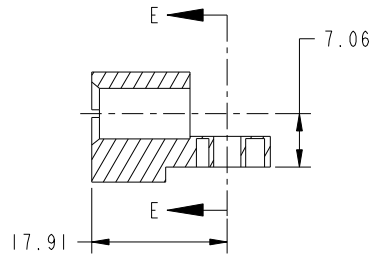
51939-103--
NOTE: 3



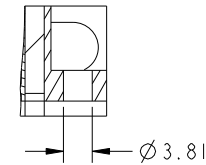
BROKEN-OUT SECTION A-A
SCALE 2:1



BROKEN-OUT SECTION B-B
SCALE 2:1



SECTION C-C



PARTIAL SECTION E-E

mat'l code				SEE NOTE		tolerances unless otherwise specified		CUSTOMER		 www.fciconnect.com	
lir	ecn no.	dr	date	linear	0.X ±0.5	projection		COPY		title	
D				angles	0.XX ±0.25					9P + 24S RIGHT ANGLE SOLDER HEADER	
					0.XXX ±0.10			product family		code	
				dr	0° ±2°			PwrBlade		213	
				enr	T. BRUNGARD 01/12/04			size		sheet	
				chr	M. GRAY 01/12/04			A		2	
				appd	M. GRAY 01/12/04			51939-103			
sheet index	revision sheet					scale		1:1			

cage code 28506

Pro/E

PDM: Rev:D

STATUS: Released

Printed: Sep 26, 2008

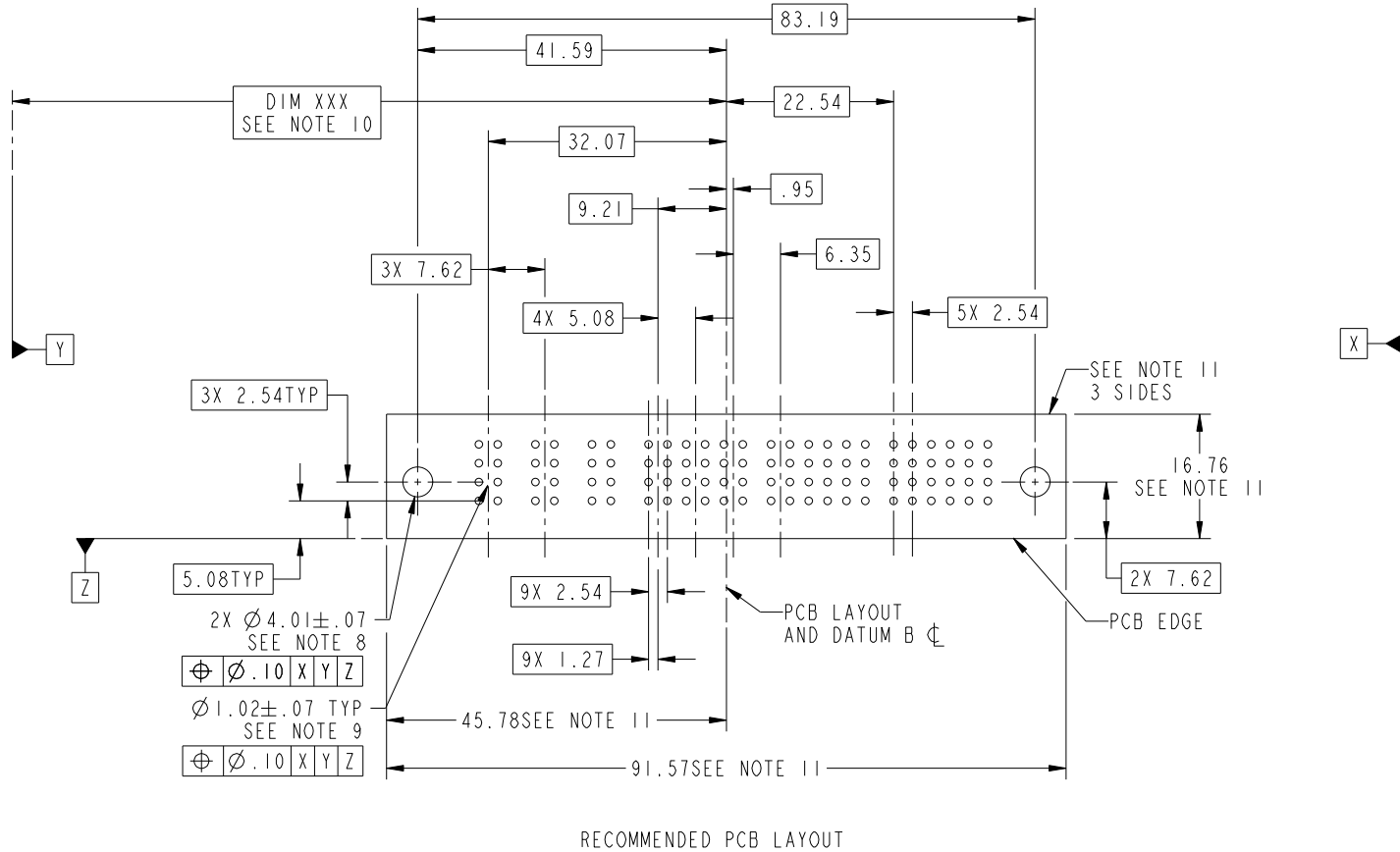
Tous droits strictement reserves. Reproduction ou communication a des tiers interdite sous quelque forme que ce soit sans autorisation ecrite du proprietaire. Propriete de c.FCI. Droits de reproduction FCI.

All rights strictly reserved. Reproduction or issue to third parties in any form whatever is not permitted without written authority from the proprietor. Property of FCI. Copyright FCI.



PRODUCT NUMBER

51939-103--
NOTE: 3



RECOMMENDED PCB LAYOUT

mat'l code		SEE NOTE		tolerances unless otherwise specified		CUSTOMER		 www.fciconnect.com	
lfr	ecn no.	dr	date	linear	0.X ±0.5	COPY		title	
D					0.XX ±0.25	projection		9P + 24S	
				angles	0.XXX ±0.10			RIGHT ANGLE SOLDER HEADER	
				dr	0° ±2°			product family	
				enrg	T. BRUNGARD 01/12/04	MM		PwrBlade	
				chr	M. GRAY 01/12/04	scale		code	
				appd	M. GRAY 01/12/04	1:1		213	
sheet index	revision sheet							sheet	
								3	
								A 51939-103	

cage code 28506

Pro/E

PDM: Rev:D

STATUS: Released

Printed: Sep 26, 2008

Tous droits strictement reserves. Reproduction ou communication a des tiers interdite sous quelque forme que ce soit sans autorisation ecrite du proprietaire. Propriete de c.FCI. Droits de reproduction FCI.

All rights strictly reserved. Reproduction or issue to third parties in any form whatever is not permitted without written authority from the proprietor. Property of FCI. Copyright FCI.



1 | 2

3

4

PRODUCT NUMBER

51939-103--
NOTE: 3

NOTES:

1. DIMENSIONS AND TOLERANCES ARE IN ACCORDANCE WITH ASME Y14.5M, 1994 UNLESS OTHERWISE SPECIFIED.

CONNECTOR NOTES:

2. HOUSING MATERIAL: UL 94 V-0 GLASS FILLED HIGH-TEMP THERMOPLASTIC
POWER CONTACT MATERIAL: COPPER ALLOY
SIGNAL PIN MATERIAL: COPPER ALLOY

3. PLATING:
SEE ITEM 1&2 IN PRINT 10064183 FOR PLATING SPEC OF 51939-103; 51939-103LF

4. MANUFACTURER'S NAME, P/N, AND DATE CODE TO APPEAR ON THIS SURFACE.

5. PRODUCT SPECIFICATION GS-12-149.
APPLICATION SPECIFICATION BUS-20-067.

6. PACKAGED IN TRAYS.

PCB NOTES:

7. ALL HOLE DIAMETERS ARE FINISHED HOLE SIZE.

8. MOUNTING HOLES, WHERE APPLICABLE, ARE UNPLATED.

9. $\varnothing 1.151 \pm 0.025$ DRILLED HOLES PLATED WITH)
0.008 MIN SnPb OR Sn OVER 0.03
TO 0.08 Cu PLATING TO ACHIEVE
 $\varnothing 1.02 \pm .07$ HOLE.

10. "DIM XXX" TO BE DETERMINED BY THE CUSTOMER.

11. CONNECTOR KEEP-OUT ZONE.

12. A \triangle SYMBOL WILL BE NEXT TO ANY DIMENSION, VIEW, OR NOTE WHICH HAS BEEN MODIFIED WITH THE CURRENT DRAWING REVISION.

mat'l code				SEE NOTE			tolerances unless otherwise specified			CUSTOMER		 www.fciconnect.com	
lir	ecm no.	dr	date	linear	0.X ± 0.5			COPY		title 9P + 24S RIGHT ANGLE SOLDER HEADER			
D					0.XX ± 0.25			projection					
					0.XXX ± 0.10								
				angles	0° $\pm 2°$					product family PwrBlade		code	
				dr	T. BRUNGARD	01/12/04	MM		size		dwg no	213	
				enrg	M. GRAY	01/12/04			A		51939-103	sheet	
				chr	M. GRAY	01/12/04	scale		1:1			4	
				appd	M. GRAY	01/12/04							
sheet index		revision sheet											

1 | 2

Pro/E

PDM: Rev:D

STAT: Released

Printed: Sep 26, 2008

cage code 2856

4